

# BMP Checklist

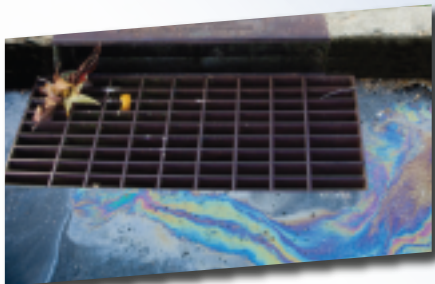
Best Management Practices (BMPs) can reduce or eliminate pollutant discharges to the stormwater drainage system.

## General Site Preparation

- Seal storm drains and inlets.
- Sweep area to remove trash and debris prior to conducting washing activities. Dispose of solids as trash.
- Wash without soaps or solvents when possible.
- Minimize water use.
- Contain and collect all spent wash water and dispose as wastewater.

## Surface Washing

- Clean any excess oil with dry absorbent and dispose as trash.
- Wash water may be filtered to remove pollutants such as waste oil or suspended solids prior to disposal. This practice also reduces pollutant deposition on surfaces adjacent to the washing activities.
- If non-hazardous paint chips are present in the effluent, filter wash water and dispose of paint solids and filters as trash.
- If soap is not used and no pollutants are visible in the discharge, residual rinse water may evaporate in place.
- Inspect surfaces when dry and sweep up any remaining contaminants after wash water is collected.



## Waterless Spill Control & Clean Up

- Place an adequate supply of spill clean-up materials where they can be easily accessed throughout your facility.
- Clean leaks, drips, and other spills with as little water as possible. Use rags for small spills, a damp mop for general cleanup, and dry absorbent material for larger spills.
- Clean up spills promptly. Contain spills so that they do not leave a facility's property nor enter a storm drain inlet.

## Employee Training

- Establish a regular training schedule to train all new employees and conduct annual refresher training.
- Document all training sessions.

## Wastewater Disposal Options

Wastewater generated by surface washing activities may not be discharged to the City's stormwater drainage system. Spent wash water may be discharged to the sanitary sewer, disposed of by a waste hauler, or infiltrated into the ground. These disposal options are further described below.

### Option 1: Eliminate Onsite Washing

- Discontinue onsite washing all together. Move activity off site to a location where spent wash water can be disposed of properly.

### Option 2: Discharge Wastewater to the Sanitary Sewer

Wastewater discharges must comply with the following conditions if disposed to the sanitary sewer:

- Discharge wastewater to a permitted sewer connection.
- Temperatures must be less than 140°F (60°C).
- The pH must be between 6.0 and 10.0. Dilution is not permitted.
- Discharges should not include:
  - ♦ Pollutants that may create a fire or explosion hazard (e.g. gasoline or diesel fuel).
  - ♦ Solid or viscous pollutants in amounts sufficient to cause obstruction or blockage of flow.
  - ♦ Petroleum oil, non-biodegradable cutting oil, or other products of mineral oil origin.
  - ♦ Oil based paint.
  - ♦ Significant concentrations of heavy metals.
- When washing at a fixed location, a wash rack that includes a sand oil separator or a full-capture wastewater collection system may also be installed. This treats wastewater prior to disposal.

- Filter wastewater if debris, fibers, or other suspended solids are present.
- No wastewater shall be discharged into any publicly-owned sewer manholes without prior authorization from the City.
- Wastewater must comply with local sewer discharge limits and requirements (RMC 14.26.140).
- Maintain a logbook of all discharges.

### Option 3: Disposal of Wastewater by a Licensed Waste Hauler

- Collect and dispose of wastewater to a permitted septage receiving facility.
- When wastewater meets any of the following criteria, a hazardous waste hauler must transport and dispose of it.
  - ♦ Is corrosive (pH less than 5.5) or caustic (pH greater than 10.0).
  - ♦ Contains a pollutant that may create a fire or explosion hazard (e.g. gasoline or diesel fuel).
  - ♦ Contains petroleum oil, non-biodegradable cutting oil, or other products of mineral oil origin.
  - ♦ Contains other wastes in hazardous concentrations.

### Option 4: Discharge Wastewater to a Porous Surface

- Minimal amounts of spent wash water may be allowed to infiltrate into a landscaped or gravel area provided the following conditions are met:
  - ♦ Consent to discharge on site is obtained from the property owner.
  - ♦ Discharges do not contain hazardous constituents.
  - ♦ Area receiving discharge does not overflow.
  - ♦ Discharges do not result in nuisance conditions.
  - ♦ Discharges do not contaminate groundwater or cause other environmental damage.

# Waste Disposal Options

Surface	Cleaning Method	Disposal Option
Sidewalks, plazas	<ul style="list-style-type: none"> <li>Block storm drains</li> <li>Dry cleanup</li> <li>Clean without soap</li> </ul>	Sanitary sewer (Option 2)
Parking areas, driveways, drivethroughs	<ul style="list-style-type: none"> <li>Block storm drains</li> <li>Use absorbents to pick up oil, then dry sweep</li> <li>Clean without soap</li> </ul>	Sanitary sewer (Option 2)
Restaurant/food handling, dumpster areas, grease storage	<ul style="list-style-type: none"> <li>Block storm drains</li> <li>Dry cleanup</li> <li>If water must be used after dry cleanup, block storm drains and clean without soap</li> </ul>	Sanitary sewer (Option 2)
Building surfaces, decks, etc. without loose paint	<ul style="list-style-type: none"> <li>Block storm drains</li> <li>Use high-pressure water, no soap</li> </ul>	Sanitary sewer (Option 2)
Unpainted building surfaces, wood decks etc.	<ul style="list-style-type: none"> <li>Block storm drains</li> <li>Use soap or acid wash to remove deposits, wood restorer, or other chemicals</li> </ul>	Sanitary sewer (Option 2) pH less than 6 or greater than 10: Hazardous waste hauler
Painted surfaces being cleaned to remove paint	<ul style="list-style-type: none"> <li>Block storm drains</li> <li>Dry cleanup</li> </ul>	Sanitary sewer (Option 2), or Hazardous waste hauler
Graffiti removal	<ul style="list-style-type: none"> <li>Block storm drains</li> <li>Wet sand-blast</li> </ul>	Sanitary sewer (Option 2), or Hazardous waste hauler
Vehicle Washing	<ul style="list-style-type: none"> <li>Block storm drains</li> <li>Collect wash water for disposal</li> </ul>	Sanitary sewer (Option 2), or Licensed waste hauler (Option 3)

Contact the local regulatory authorities listed below to verify compliance.

## What is Hazardous Waste?

Hazardous waste is a solid or liquid that because of characteristics such as flammability (e.g. solvents), corrosivity (e.g. acids and bases), reactivity (e.g. explosives) or toxicity (e.g. metals and pesticides) can be hazardous to human health or the environment.

The lab methods and concentration levels used to determine if a waste is hazardous are specified in Title 22, Division 4.5, of the California Code of Regulations. Call Roseville's Fire Department at 774-5800 for more information.

## For More Information

### City of Roseville

#### Environmental Utilities

Industrial Waste Section  
(916) 746-1883

Solid Waste Division  
(916) 774-5780

Stormwater Division  
(916) 774-5751

#### Fire Department

Hazardous Waste Division  
(916) 774-5800

#### Planning Department

(916) 774-5332

### Placer County

#### Health Department

(530) 745-2300

# Surface Washing Best Management Practices

## Stormwater Management Program



In accordance with State and Federal law, Roseville's stormwater drainage system is permitted for discharges to our local waterways. To comply with this State permit and to protect water quality in our local creeks, the City has developed a program to address discharges made to the stormwater drainage system from industrial and commercial businesses. This program includes general outreach as well as compliance inspections at local facilities.

The City's stormwater drainage system includes the surface streets, gutters, ditches, swales, drain inlets, piping, and our local creeks. Non-stormwater discharges occur when water or other fluids used in the course of business travel into the drainage system.

Residuals from waste left on the ground may also flow into the stormwater system during rain events. These discharges can adversely impact local creeks if not managed properly.

Under the provisions of our State permit, most non-stormwater discharges are prohibited from entering the City's stormwater drainage system. Roseville Municipal Code Title 14.20 (<http://qcode.us/codes/roseville>) specifies these limitations, lists exemptions, and provides enforcement options for continued non-compliance.

This fact sheet identifies typical activities conducted by pressure washers and the associated pollutant discharges. Structural and operational Best Management Practices (BMPs) which can prevent these illicit discharges are also described. This fact sheet can help you prepare for a City inspection as the activities and BMPs listed herein are integral to these inspections. This fact sheet may also be used to train your employees. The City recommends distributing copies of this fact sheet to your employees and/or posting a copy in a prominent place at your facility.

### Sanitary Sewer vs. Storm Drains

The sanitary sewer system collects and treats wastewater from homes and businesses before discharging purified flows into local waterways.

The stormwater conveyance system collects rainwater from urban areas. Flows entering this system ARE NOT treated prior to release into local waterways. Consequently, pollutants entering these pipes flow directly into the environment. This can harm local wildlife and impact public health.